



KMSR Series

Single Phase Solid State Relays



- Hockey puck style single phase SSR
- LED indicator of the control input status
- Clip cover of IP20 touch protection
- Available 4 ~ 32VDC or 90 ~ 265VAC input

Ordering Information

KMSR - ① ② ③ ④

① Input Voltage	D	4 - 32 VDC
	A	90 - 265 VAC
② Output Voltage	S	Single Phase AC
	D	Single Phase DC
③ Load Current		
005	5A*	040 40A
010	10A	050 50A
020	20A	060 60A
025	25A	100 100A
030	30A	
④ Load Voltage	AC	2 90 - 240V
		4 90 - 480V
	DC	5 50V
		1 100V
	4 400V	

*DC output type only

Specifications

Insulation Resistance	100MΩ/500VDC (btwn Terminal & Case)
Dielectric Strength	2500VAC(50/60Hz 1minute)
Vibration Resistance	10-55Hz, amplitude: 1.5mm,x,y,z each axis 2 hours
Shock Resistance	100m/s ² ,s,y,z each axis 3times
Storage Temperature	-30°C~ +90°C
Ambient Temperature	-25°C~ +70°C (-13°F~158°F)
Ambient Humidity	45 - 85% R.H
Weight	approx. 100g

Characteristics

DC Input / AC Output (90 - 240VAC)

Model#	KMSR-	DS0102	DS0202	DS0252	DS0302	DS0402	DS0502	DS0602	DS1002
Input	Rated Control Voltage	4 - 32VDC							
	Pick-up Voltage	3VDC Minimum							
	Drop-out Voltage	1.5VDC Maximum							
	Input Current	3-35mA							
Output	Rated Load Voltage	90 - 240VAC							
	Peak Voltage	600V						800V	
	Rated Load Current	10A	20A	25A	30A	40A	50A	60A	100A
	Frequency	47 - 63Hz							
	Single Cycle Surge Current Resistance	170A	250A	315A			580A		
	Output Leakage Current (Maximum)	10mA	15mA						
	Output on Voltage Drop	1.5V Maximum							
	Minimum Switching Current	1A							
	Pick-up/Drop-out Time	1/2 cycle+1ms Maximum							

DC Input / AC Output (90 - 480VAC)

Model#	KMSR-	DS0104	DS0204	DS0254	DS0304	DS0404	DS0504	DS0604	DS1004
Input	Rated Control Voltage	4 - 32VDC							
	Pick-up Voltage	3VDC Minimum							
	Drop-out Voltage	1.5VDC Maximum							
	Input Current	3 - 35mA							
Output	Rated Load Voltage	90 - 480VAC							
	Peak Voltage	800V	1200V						
	Rated Load Current	10A	20A	25A	30A	40A	50A	60A	100A
	Frequency	47 - 63Hz							
	Single Cycle Surge Current Resistance	170A	250A	350A	370A	580A			
	Output Leakage Current (Maximum)	20mA							
	Output on Voltage Drop	1.3V MAX	1.6V MAX	1.8V Maximum					
	Minimum Switching Current	1A							
	Pick-up/Drop-out Time	1/2 cycle+1ms Maximum							

DC Input / DC Output (4-32VDC)																			
Model#	KMSR- DD0055 DD0105 DD0205 DD0305 DD0405 DD0505 DD0101 DD0201 DD0301 DD0401 DD0501 DD0104 DD0204 DD0304 DD0404 DD0504																		
Input	Rated Control Voltage	4 - 32VDC																	
	Pick-up Voltage	3VDC Minimum																	
	Drop-out Voltage	1.5VDC Maximum																	
	Input Current	5 - 20mA																	
Output	Rated Load Voltage	10-50VDC					10-100VDC					10-400VDC							
	Rated Load Current	5A	10A	20A	30A	40A	50A	10A	20A	30A	40A	50A	10A	20A	30A	40A	50A		
	Drop-out Voltage	2.0VDC																	

Tower Lights

AC Input / AC Output (90 - 240VAC)										
Model#	KMSR- AS0102 AS0202 AS0252 AS0302 AS0402 AS0502 AS0602 AS1002									
Input	Rated Control Voltage	90-265VAC								
	Pick-up Voltage	72VAC Minimum								
	Drop-out Voltage	60VAC Maximum								
	Input Current	15mA Maximum								
Output	Rated Load Voltage	90 - 240VAC								
	Peak Voltage	600V						800V		
	Rated Load Current	10A	20A	25A	30A	40A	50A	60A	100A	
	Frequency	47 - 63Hz								
	Single Cycle Surge Current Resistance	170A	250A	315A			580A			
	Output Leakage Current (Maximum)	10mA	15mA							
	Output on Voltage Drop	1.5V Maximum								
	Minimum Switching Current	1A								
	Pick-up/Drop-out Time	1/2 cycle+1ms Maximum								

Beacon Lights

LED Indicators
Pilot Lamps

Buzzer Alarms

Pushbutton Switches

AC Input / AC Output (90 - 480VAC)										
Model#	KMSR- AS0104 AS0204 AS0254 AS0304 AS0404 AS0504 AS0604 AS1004									
Input	Rated Control Voltage	90-265VAC								
	Pick-up Voltage	72VAC Minimum								
	Drop-out Voltage	60VAC Maximum								
	Input Current	15mA Maximum								
Output	Rated Load Voltage	90 - 480VAC								
	Peak Voltage	800V	1200V							
	Rated Load Current	10A	20A	25A	30A	40A	50A	60A	100A	
	Frequency	47 - 63Hz								
	Single Cycle Surge Current Resistance	170A	250A	350A	370A	580A				
	Output Leakage Current (Maximum)	20mA								
	Output on Voltage Drop	1.3V MAX	1.6V MAX	1.8V Maximum						
	Minimum Switching Current	1A								
	Pick-up/Drop-out Time	1/2 cycle+1ms Maximum								

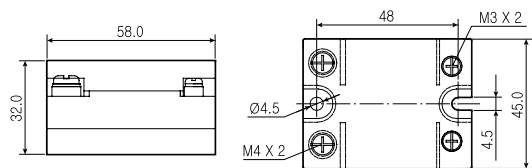
Limit Switches

Foot Switches

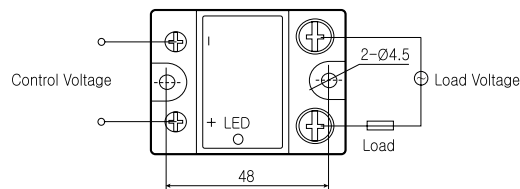
SSR

Relay & Sockets

Dimension



Connection Diagram

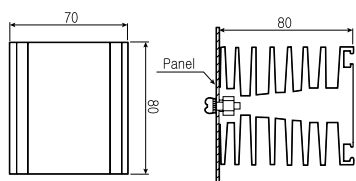


Relay Terminal Blocks

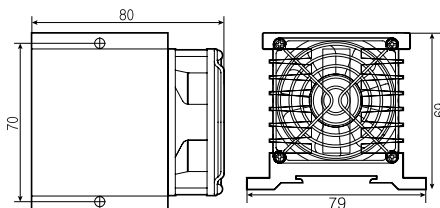
Terminal Blocks

Optional Heatsink

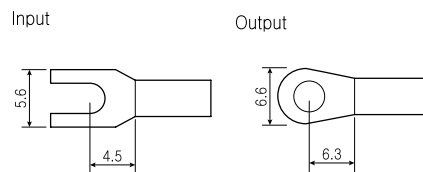
KSH-A040(25A-40A)



KSH-A100(40A-100A)



Terminals



Fuse Holders

Enclosures